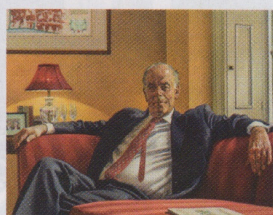


LONDON *notebook*

● SHOPPING ● DINING ● ARTS ● THINGS TO DO ● PLACES TO STAY ●

3 OF THE BEST EXHIBITIONS



1 | ROYAL SOCIETY OF PORTRAIT PAINTERS

This annual showcase will feature more than 220 works, including portraits of Neil Osborn (above) and actress Tilda Swinton and her father.

16 April to 1 May; £3. *Mall Galleries, The Mall, SW1Y 5BD, 020 7930 6844, therp.co.uk.*

2 | ALEXANDER LINDSAY: ALTITUDE

A fascinating presentation focusing on the award-winning photographer, artist and filmmaker's 20,000-mile, eight-month expedition across South America.

16 April to 20 June; free. *Piano Nobile, Kings Place, 90 York Way, N1 9AG, 020 7229 1099, piano-nobile.com.*

3 | PUBLIC LONDON: TEN YEARS OF TRANSFORMING LONDON'S PUBLIC SPACES

Exploring the initiatives that have changed how the capital's streets, squares and green spaces have been designed.

23 April to 11 July; free. *NLA, The Building Centre, Store Street, WC1E 7BT, 020 7636 4044, newlondonarchitecture.org.*

EYE FOR DETAIL

Kitchen specialist Humphrey Munson has opened a second showroom, in St Albans. Drawing on a heritage of craftsmanship stretching back more than a century, every kitchen is handmade in its Felsted workshop and combines classic design with contemporary touches. *13 Holywell Hill, St Albans, Hertfordshire AL1 1EZ, 01727 519444, humphreymunson.co.uk.*



GOOD MOVE

Interiors specialist Amy Somerville has relocated her Primrose Hill showroom to Pimlico's design district.

The new space artfully combines the designer's signature pieces, including handmade cabinetry, furniture, rugs and fabrics, with Kaia Lighting from Vienna, such as the large, intricately crafted Ona chandelier (above), £7,200. *Amy Somerville, 42 Pimlico Road, SW1W 8LP, 020 7586 2211, amysomerville.com.*



FLOOR SHOW

Known for its custom-made carpets and rugs, Sinclair Till has opened a Notting Hill store to complement its original Battersea premises. Head here to find a wonderful array of wall-to-wall carpets and matting, hand-knotted rugs in wool, silk and hemp, kilims, woven vinyls and linoleum. *Sinclair Till, 28 Chepstow Corner, Chepstow Place, W2 4XE, 020 7792 6949, sinclairtill.co.uk.*

